

Key Features

- Non-contact sensing, up to 0.5" gap distance (dependent on magnet size/configuration)
- End-of-shaft mounting
- Nylon, PVC, aluminum, or stainless steel
- Custom sizes and number of pulses
- Impervious to water, grease, dust, oil, dirt, etc.

The large gap distance from the sensor allows maximum flexibility in mounting the sensor, making them ideal for environments where there is vibration, dirt, dust, grease, or water.



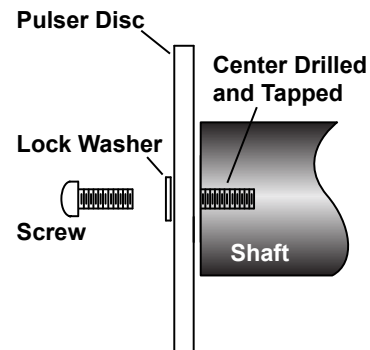
Description

Standard shaft-end Pulser Discs are made of nylon, PVC, aluminum, or stainless steel and have magnets of alternating polarity (N-S-N-S) embedded on the outside face or the circumference. Simply center-drill and tap the end of the shaft to be monitored and secure the Pulser Disc onto the shaft.

The number of pulses per revolution generated by the Pulser Disc and sensor depends on the sensor used. Generally, a Hall Effect sensor will produce one pulse for every two magnets, since the sensor switches between high and low in the presence of both a north and a south pole magnet. A Magnetoresistive sensor will generate one square wave pulse per magnet. Special discs can be custom manufactured to meet specific needs. Steel slugs are also available on aluminum or PVC discs.

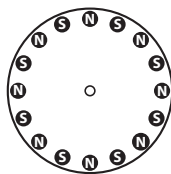
Mounting

Center-drill the shaft to a depth of 0.5" with a No. 21 drill, then tap for a 10/32 UNF screw. Apply adhesive to the screw threads and secure onto the end of the shaft with the provided 10-32 mounting screw. Torque the mounting screw to a maximum of 8-10 foot pounds.



Pulser Discs are available in two standard configurations:

- Face Read: 0.25" thick discs with 0.25" or 0.5" diameter magnets mounted on the face of the disc.
- Edge Read: 0.625" thick discs with 0.25" or 0.5" diameter magnets mounted around the circumference.



Face Read (A)



Edge Read (B)



Reliable Products
Trustworthy People

Pulser Discs

Shaft Speed Pulse Generators

Ordering

Face Read

| Model | Material | Outside Diameter | Number of Magnets, Neodymium Magnets, or Slugs | Thickness | Bore Size | Part Number |
|------------------|-----------------|------------------|--|-----------|-----------|-------------|
| 255 - Standard | Nylon | 4" | 16 (0.5") Magnets | 0.25" | 0.196" | 700-000200 |
| 255A - Standard | Aluminum | 4" | 16 (0.5") Magnets | 0.25" | 0.196" | 700-001500 |
| 255EZ - Standard | Nylon | 4" | 16 (0.5") Magnets | 0.25" | 0.515" | 700-000206 |
| 232 - Standard | PVC | 4" | 32 (0.25") Magnets | 0.25" | 0.196" | 700-001400 |
| 232A - Standard | Aluminum | 4" | 32 (0.25") Magnets | 0.25" | 0.196" | 700-001401 |
| 256 - Standard | PVC | 2.50" | 8 (0.5") Magnets | 0.25" | 0.196" | 700-000300 |
| 256A - Standard | Aluminum | 2.50" | 8 (0.5") Magnets | 0.25" | 0.196" | 700-001600 |
| 257 - Standard | PVC | 8" | 32 (0.5") Magnets | 0.25" | 0.196" | 700-002100 |
| 257A - Standard | Aluminum | 8" | 32 (0.5") Magnets | 0.25" | 0.196" | 700-002101 |
| 258 - Standard | PVC | 4" | 8 (0.5") Magnets | 0.25" | 0.196" | 700-000209 |
| 258A - Standard | Aluminum | 4" | 8 (0.5") Magnets | 0.25" | 0.196" | 700-000212 |
| 232-EZ | PVC | 4" | 32 (0.25") Magnets | 0.25" | 0.515" | 700-001404 |
| 232 | PVC | 4" | 16 (0.25") Magnets | 0.25" | 0.196" | 700-001405 |
| 232A-EZ | Aluminum | 4" | 32 (0.25") Magnets | 0.25" | 0.515" | 700-001403 |
| 255 | Stainless Steel | 4" | 16 (0.50") Magnets | 0.25" | 0.196" | 700-000203 |
| 255 | PVC | 4" | 16 (0.50") Magnets | 0.25" | 0.196" | 700-000204 |
| 255 | PVC | 4" | 16 (0.50") Slugs | 0.25" | 0.196" | 700-000205 |
| 255 | PVC | 4" | 2 (0.50") Slugs | 0.25" | 0.196" | 700-000208 |
| 255 | PVC | 4" | 4 (0.50") Magnets | 0.25" | 0.196" | 700-000210 |
| 255 | PVC | 4" | 8 (0.50") North Facing Magnets | 0.25" | 0.196" | 700-000214 |
| 255 | PVC | 4" | 8 (0.50") Slugs | 0.25" | 0.196" | 700-000216 |
| 255 | PVC | 4" | 2 (0.50") Magnets | 0.25" | 0.196" | 700-000400 |
| 255A | Aluminum | 4" | 16 (0.50") Neodymium Magnets | 0.25" | 0.196" | 700-001503 |
| 255A-EZ | Aluminum | 4" | 16 (0.50") Magnets | 0.25" | 0.515" | 700-001502 |
| 256 | PVC | 2.50" | 8 (0.50") Slugs | 0.25" | 0.196" | 700-000301 |
| 256 | PVC | 2.50" | 2 (0.50") Magnets | 0.25" | 0.196" | 700-001200 |
| 256 | PVC | 2.50" | 2 (0.50") Slugs | 0.25" | 0.196" | 700-001201 |
| 256A | Aluminum | 2.50" | 2 (0.50") Magnets | 0.25" | 0.196" | 700-001202 |
| 256A | Aluminum | 2.50" | 4 (0.50") Magnets | 0.25" | 0.196" | 700-001700 |
| 257 | PVC | 8" | 16 (0.50") Slugs | 0.25" | 0.196" | 700-002102 |
| 257 | PVC | 8" | 8 (0.50") Slugs | 0.25" | 0.196" | 700-002103 |
| 257 | PVC | 8" | 4 (0.50") Slugs | 0.25" | 0.196" | 700-002104 |
| 257 | PVC | 8" | 16 (0.50") Magnets | 0.25" | 0.196" | 700-002105 |
| 257 | PVC | 8" | 8 (0.50") Magnets | 0.25" | 0.196" | 700-002106 |
| 257A | Aluminum | 8" | 16 (0.50") Magnets | 0.25" | 0.196" | 700-002000 |

(Continued)



Ordering

(Continued)

Face Read

| | | | | | | |
|--------------------|-----------------|-------|-----------------------------|-------|--------|------------|
| 258 | Stainless Steel | 4" | 8 (0.50") Magnets | 0.25" | 0.196" | 700-000213 |
| 258 | PVC | 4" | 8 (0.50") Neodymium Magnets | 0.25" | 0.196" | 700-000215 |
| 258A | Aluminum | 4" | 8 (0.50") Neodymium Magnets | 0.25" | 0.196" | 700-003800 |
| EZ-3/4in / EZ-18mm | PVC | 2" | 16 (0.25") Magnets | 0.50" | 0.62" | 700-000100 |
| EZ-3/4in / EZ-18mm | PVC | 2" | 8 (0.25") Magnets | 0.50" | 0.62" | 700-000101 |
| PD455 | PVC | 4.75" | 20 (0.50") Magnets | 0.25" | 0.196" | 700-002500 |
| PD455 | Aluminum | 4.75" | 20 (0.50") Magnets | 0.25" | 0.196" | 700-002501 |
| PD225 | PVC | 2.75" | 20 (0.25") Magnets | 0.25" | 0.196" | 700-002700 |
| PD725 | Aluminum | 7.50" | 60 (0.25") Magnets | 0.25" | 0.196" | 700-002800 |
| PD725 | Aluminum | 7.50" | 30 (0.25") Magnets | 0.25" | 0.196" | 700-002801 |
| PD725 | PVC | 7.50" | 30 (0.25") Slugs | 0.25" | 0.196" | 700-002803 |

Edge Read

| Model | Material | Outside Diameter | Number of Magnets, Neodymium Magnets, or Slugs | Thickness | Bore Size | Part Number |
|---------|----------|------------------|--|-----------|-----------|-------------|
| PDE450 | PVC | 4" | 20 (0.5") Magnets | 0.625" | 0.196" | 700-002600 |
| PDE450 | PVC | 4" | 20 (0.5") Slugs | 0.625" | 0.196" | 700-002604 |
| PDE450 | PVC | 4" | 16 (0.5") Magnets | 0.625" | 0.196" | 700-002614 |
| PDE450A | Aluminum | 4" | 16 (0.5") Magnets | 0.625" | 0.196" | 700-002615 |

Pulser Discs Specifications

| | |
|--|-----------------------------------|
| Maximum Speed | 10,000 rpm at ambient temperature |
| Operating Temperature (PVC and Nylon) | -40° F → +140° F |
| Operating Temperature (Aluminum and Stainless Steel) | -40° F → +302° F |

Options

| Disc Guards | Part Number |
|--|-------------|
| Standard Disc Guard (for 4" discs) | 725-005300 |
| EZ-Mount Disc Guard (for 4" discs) | 725-005200 |
| EZ-Mount Lower Disc Guard (for 4" discs) | 725-005201 |
| EZ-SCP Disc Guard (for 4" discs) | 725-005600 |
| 933 XP Disc Guard (for 4" discs) | 725-005400 |

Customization

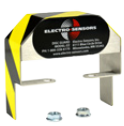
If one of our standard products does not meet your specifications, please call one of our applications specialists. Many of our products can be customized to fit specific needs.

Additional Information

Please call Electro-Sensors for more information.



Standard Disc Guard



EZ-Mount Disc Guard



Lower EZ-Mount Disc Guard



EZ-SCP Disc Guard